



3310 Cinema Surround Loudspeaker System

Application:

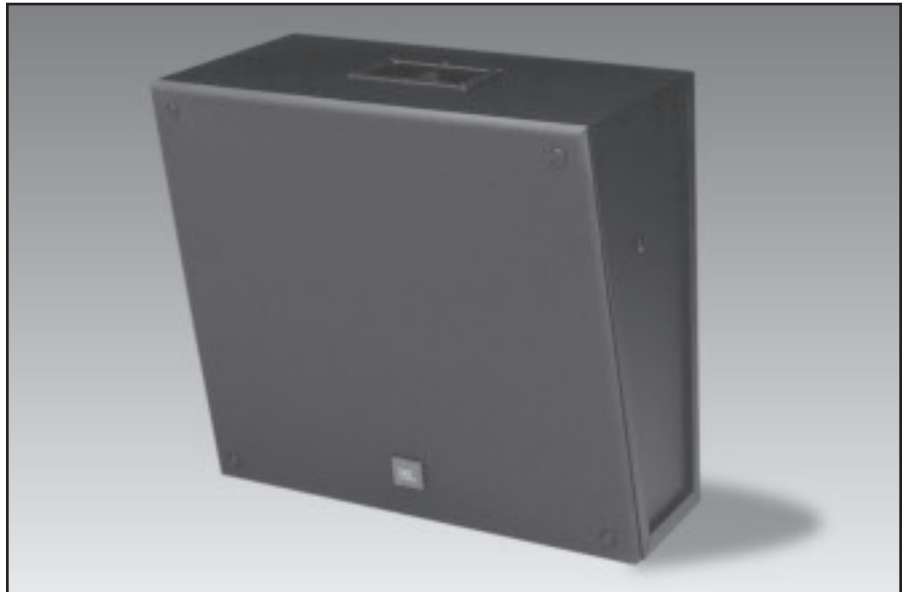
Budget conscious cinema sound systems

Key Features:

- ▶ Frequency Range: 40 Hz to 20 kHz (-10 dB)
- ▶ Sensitivity: 89 dB
- ▶ Power Capacity: 75 watts
- ▶ Components: One 200 mm (8 in.) low frequency driver, one 1 in. titanium dome high frequency tweeter
- ▶ Newly-designed passive network with driver protection circuit
- ▶ Built-in installation points
- ▶ Special cabinet shape with angled front baffle for common aiming angle (-15°)
- ▶ Input terminals located on cabinet top for quick access

The JBL 3310 cinema surround loudspeaker provides smooth coverage for surround channel reproduction. The unique shape angled cabinet gives a distinctive, but subtle, look to complement cinema interiors. Using its integral installation points, the 3310 fits the JBL 2502 U-bracket for quick, easy, and low-cost installation.

The newly designed passive crossover network is optimized to provide seamless transition between components, and includes a passive protection circuit to ensure that all components operate within their optimal power handling range for long term, high-reliability operation.



System Specifications:

Frequency range (-10 dB):	40 Hz to 20 kHz
Frequency response (± 3 dB):	100 Hz to 12 kHz
Power capacity ¹ (system):	75 W
Sensitivity:	89 dB
Nominal impedance:	8 ohms
Crossover frequency:	2.5 kHz
Nominal coverage:	100° horizontal, 100° vertical
System Polarity:	Positive voltage to RED produces forward cone motion
Input connectors:	Barrier strip screw terminals
Net system weight:	13 kg (29 lbs)
Shipping weight:	30 kg (66 lbs) shipped in pairs
Dimensions (H x W x D):	446 x 483 x 267 mm 17.5 x 19 x 10.5 inches

¹Rating based on test signal of continuous pink noise, per IEC spectrum for two hours duration.

JBL continually engages in research related to product improvement. New materials, production methods, and design refinements are introduced into existing products without notice as a routine expression of that philosophy. For this reason, any current JBL product may differ in some respect from its published description, but will always equal or exceed the original design specifications unless otherwise stated.

▶ 3310 Cinema Surround Loudspeaker System



JBL Professional
8500 Balboa Boulevard, P.O. Box 2200
Northridge, California 91329 U.S.A.

H A Harman International Company

SS 3310
CRP 5M
05/06