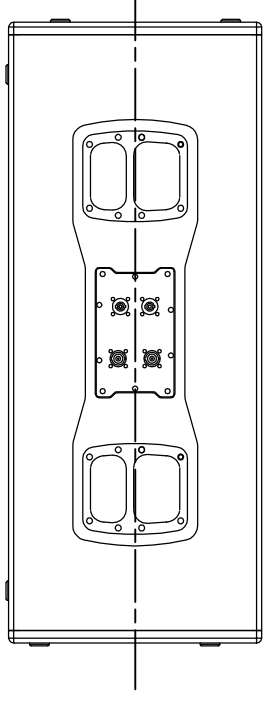
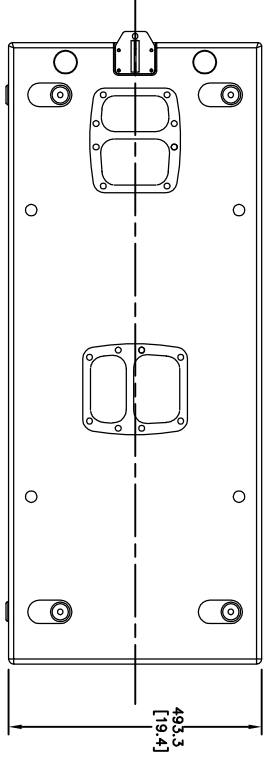
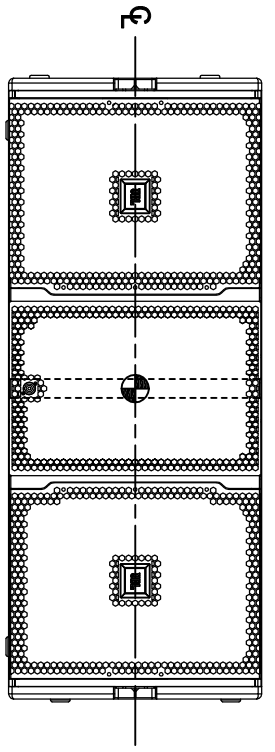
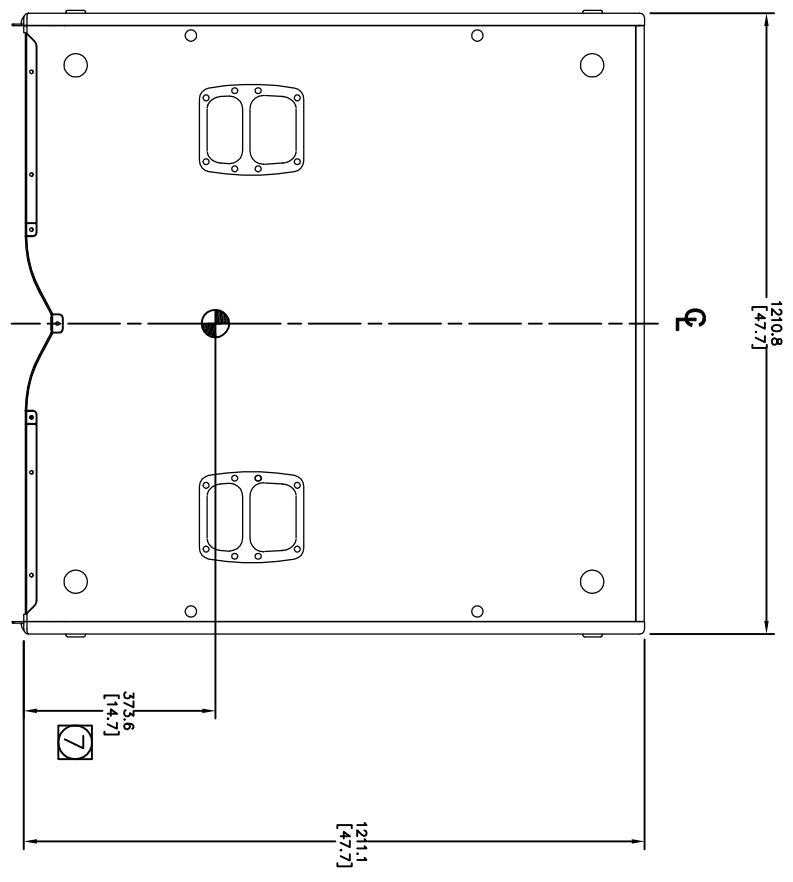


THESE DRAWINGS AND SPECIFICATIONS ARE THE PROPERTY OF JBL. INCORPORATED. ALL MATERIAL SPECIFIED ON THIS DRAWING SHALL COMPLY WITH EUROPEAN DIRECTIVE 2002/95/EC. **REHS** THEY ARE ISSUED IN STRICT CONFIDENCE AND SHALL NOT BE REPRODUCED OR USED AS THE BASIS FOR MANUFACTURE OR APPARATUS WITHOUT WRITTEN PERMISSION.

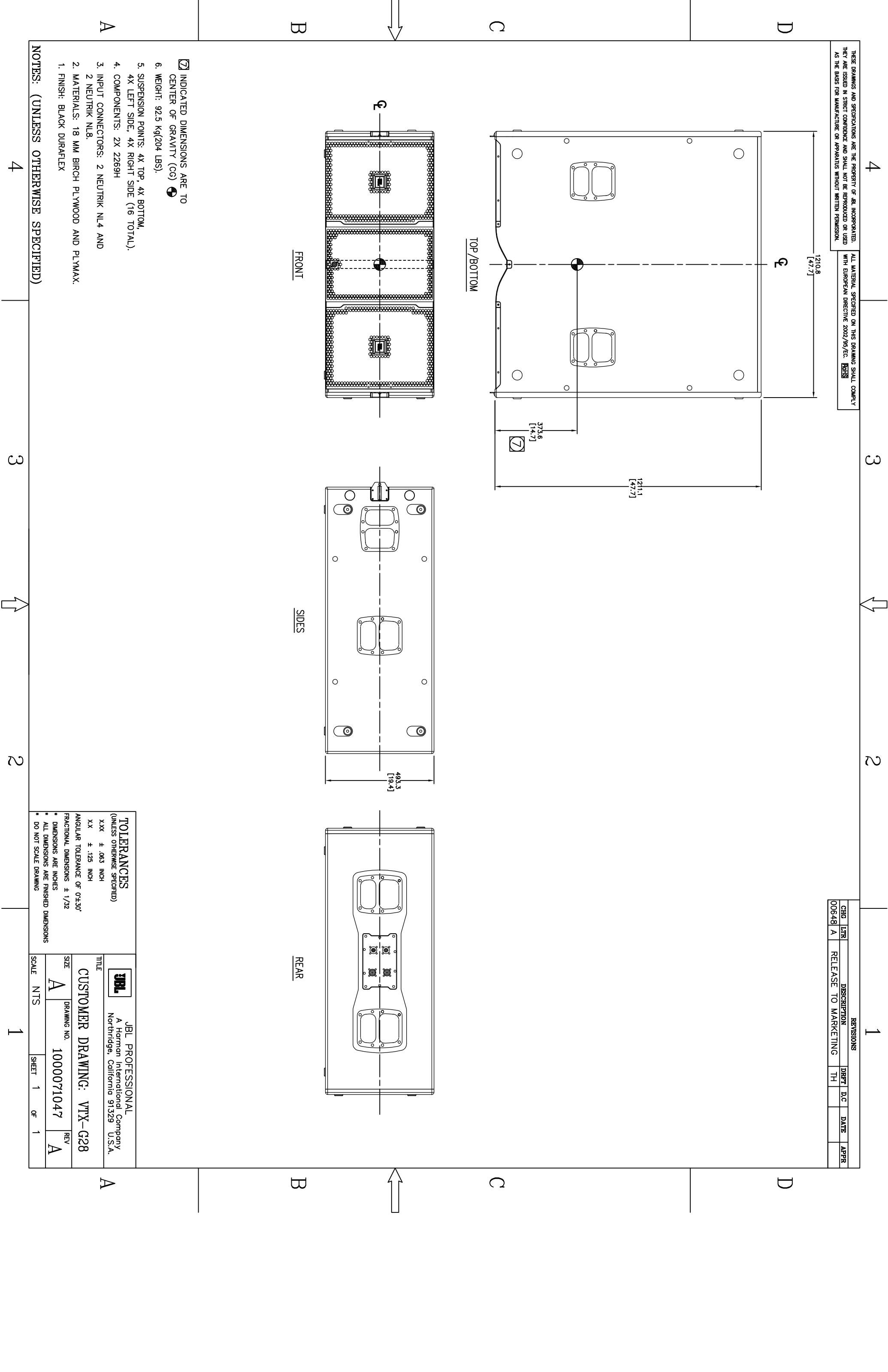
REVISIONS		DRFT	D.C	DATE	APPR
CHG	LTR	DISCREPTION	TH		
00648	A	RELEASE TO MARKETING			



- 7 INDICATED DIMENSIONS ARE TO CENTER OF GRAVITY (CG)
- 6. WEIGHT: 92.5 Kg(204 LBS).
- 5. SUSPENSION POINTS: 4X TOP, 4X BOTTOM, 4X LEFT SIDE, 4X RIGHT SIDE (16 TOTAL).
- 4. COMPONENTS: 2X 2269H
- 3. INPUT CONNECTORS: 2 NEUTRIK NL4 AND 2 NEUTRIK NL8.
- 2. MATERIALS: 18 MM BIRCH PLYWOOD AND PLYMAX.
- 1. FINISH: BLACK DURAFLEX

NOTES: (UNLESS OTHERWISE SPECIFIED)

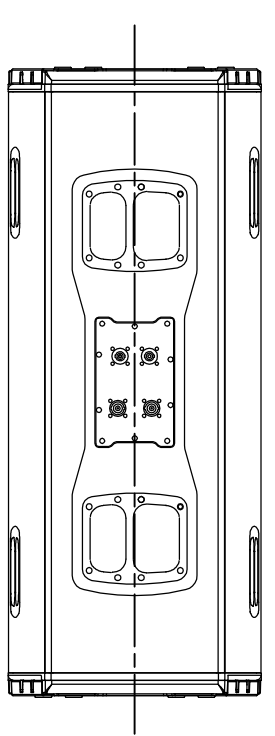
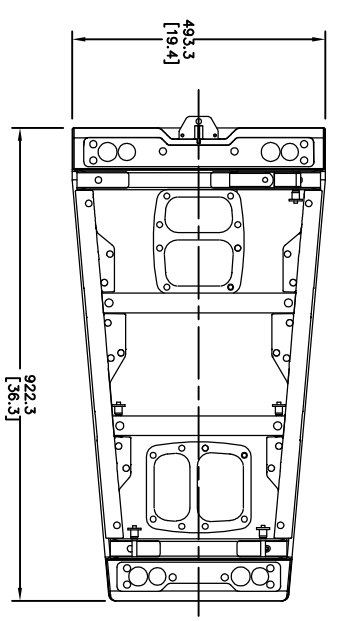
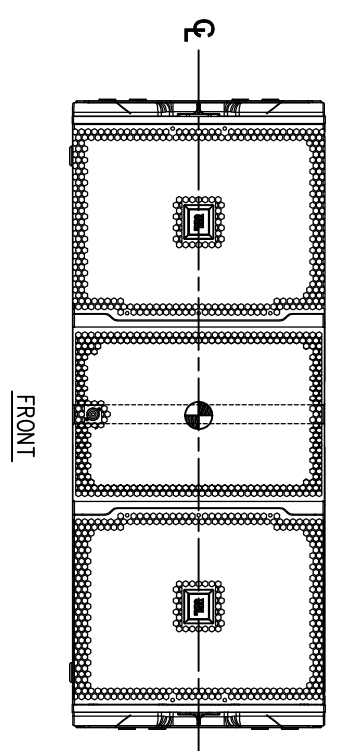
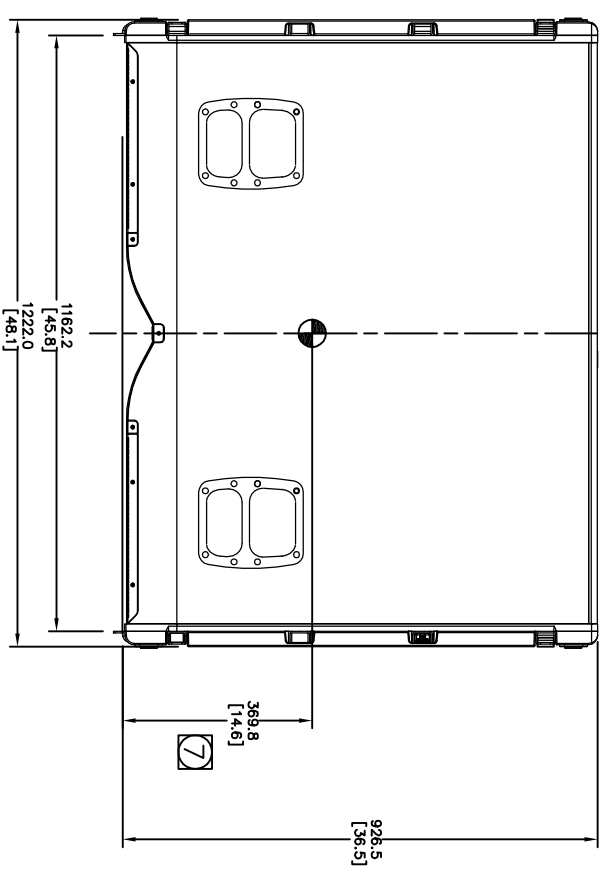
TOLERANCES (UNLESS OTHERWISE SPECIFIED)		JBL PROFESSIONAL	
XXX	± .063 INCH	A Harman International Company	
XX	± .125 INCH	Northridge, California 91329 U.S.A.	
ANGULAR TOLERANCE OF 0°-30°		CUSTOMER DRAWING: VTX-G28	
FRACTIONAL DIMENSIONS ± 1/32		SIZE	DRAWING NO.
DIMENSIONS ARE INCHES		A	1000071047
ALL DIMENSIONS ARE FINISHED DIMENSIONS		SCALE	SHEET 1 OF 1
DO NOT SCALE DRAWING		NTS	



THESE DRAWINGS AND SPECIFICATIONS ARE THE PROPERTY OF JBL INCORPORATED. THEY ARE ISSUED IN STRICT CONFIDENCE AND SHALL NOT BE REPRODUCED OR USED AS THE BASIS FOR MANUFACTURE OR APPARATUS WITHOUT WRITTEN PERMISSION.

ALL MATERIAL SPECIFIED ON THIS DRAWING SHALL COMPLY WITH EUROPEAN DIRECTIVE 2002/95/EC. **REHS**

REVISIONS				
CHG	LTR	DESCRIPTION	DWFT	DATE
00648	A	RELEASE TO MARKETING	TH	



- 7 INDICATED DIMENSIONS ARE TO CENTER OF GRAVITY (CG)
6. WEIGHT: 83.0 Kg(183 LBS).
5. SUSPENSION SYSTEM: JBL PROPRIETARY HINGE-BARS, BALL LOCKING PINGS AND SUSPENSION FRAME.
4. COMPONENTS: 2X 2269H
3. INPUT CONNECTORS: 2 NEUTRIK NL4 AND 2 NEUTRIK NL8.
2. MATERIALS: 18 MM BIRCH PLYWOOD AND PLYMAX.
1. FINISH: BLACK DURAFLEX

NOTES: (UNLESS OTHERWISE SPECIFIED)

TOLERANCES (UNLESS OTHERWISE SPECIFIED)	
XXX	± .063 INCH
XX	± .125 INCH
ANGULAR TOLERANCE OF 0°-30°	FRACTIONAL DIMENSIONS ± 1/32
* DIMENSIONS ARE INCHES	
* ALL DIMENSIONS ARE FINISHED DIMENSIONS	
* DO NOT SCALE DRAWING	

	JBL PROFESSIONAL A Harman International Company Northridge, California 91329 U.S.A.
TITLE	CUSTOMER DRAWING: VTX-S28
SIZE	A
DRAWING NO.	1000071046
SCALE	NTS
SHEET	1 of 1
REV	A

